

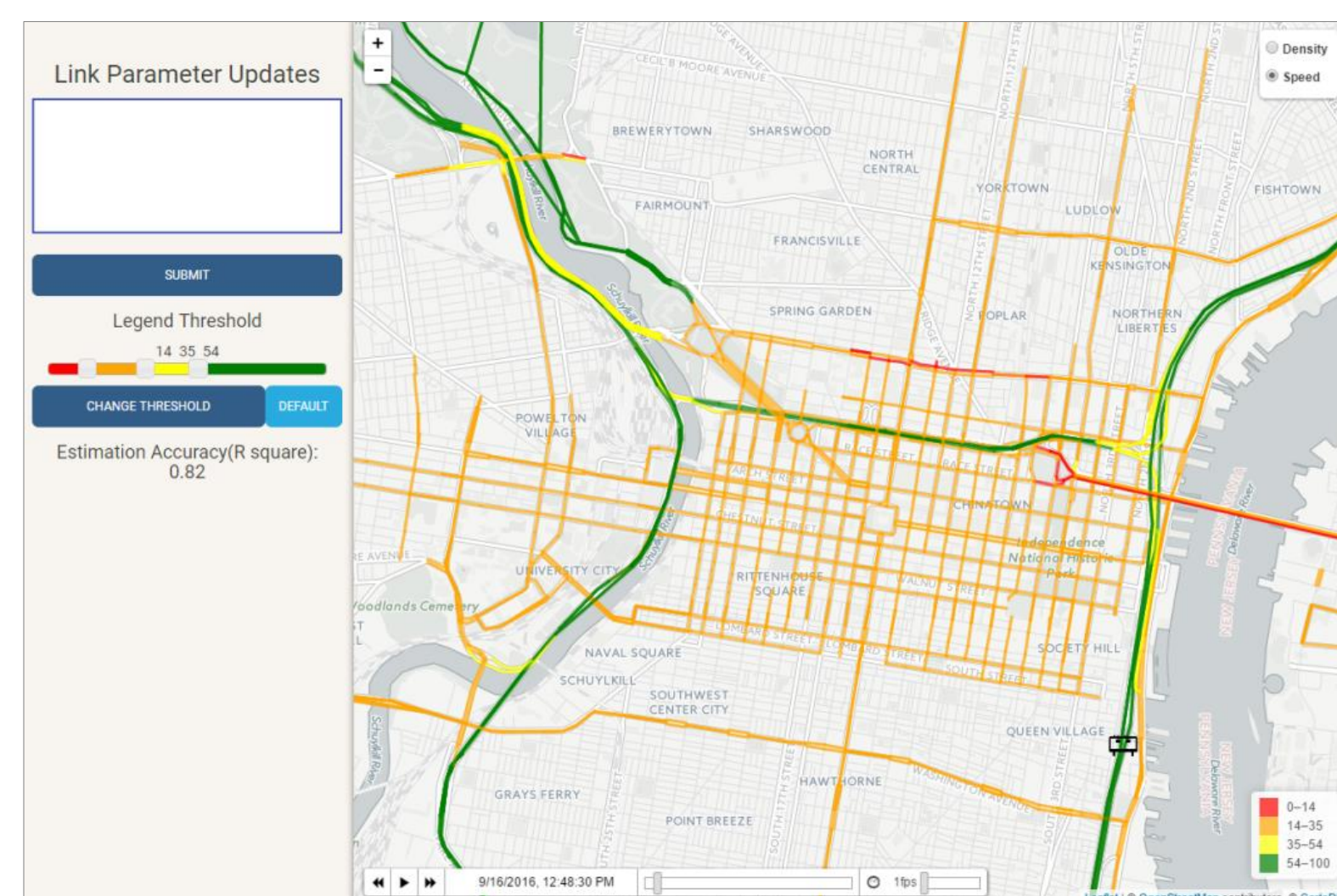
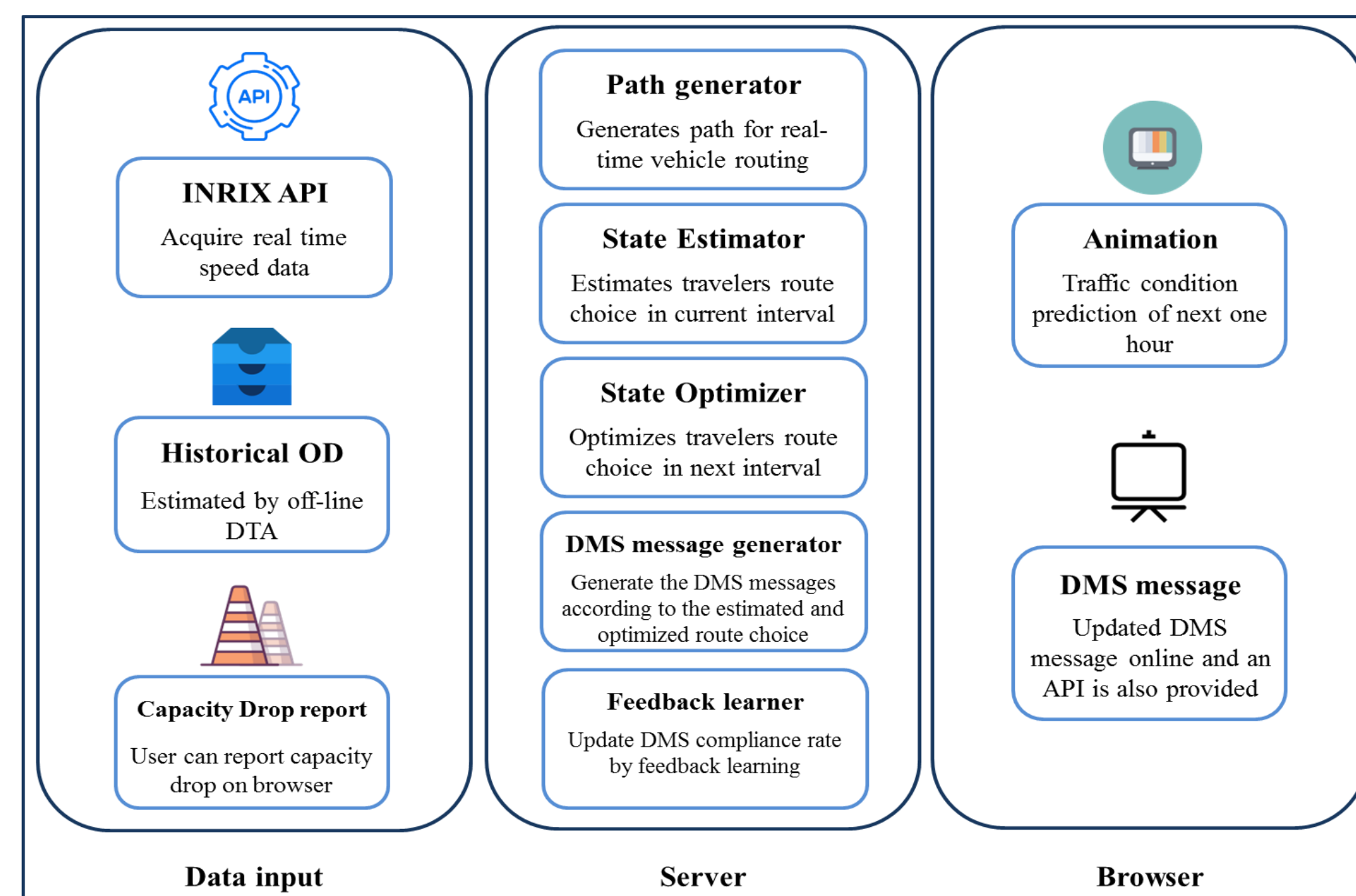
Introduction

The Mobility Data Analytics Center (MAC) aims to collect, integrate and learn from the massive amounts of mobility data and contribute to the development of smarter multi-modal multi-jurisdictional transportations systems. The ultimate objective of MAC is to:

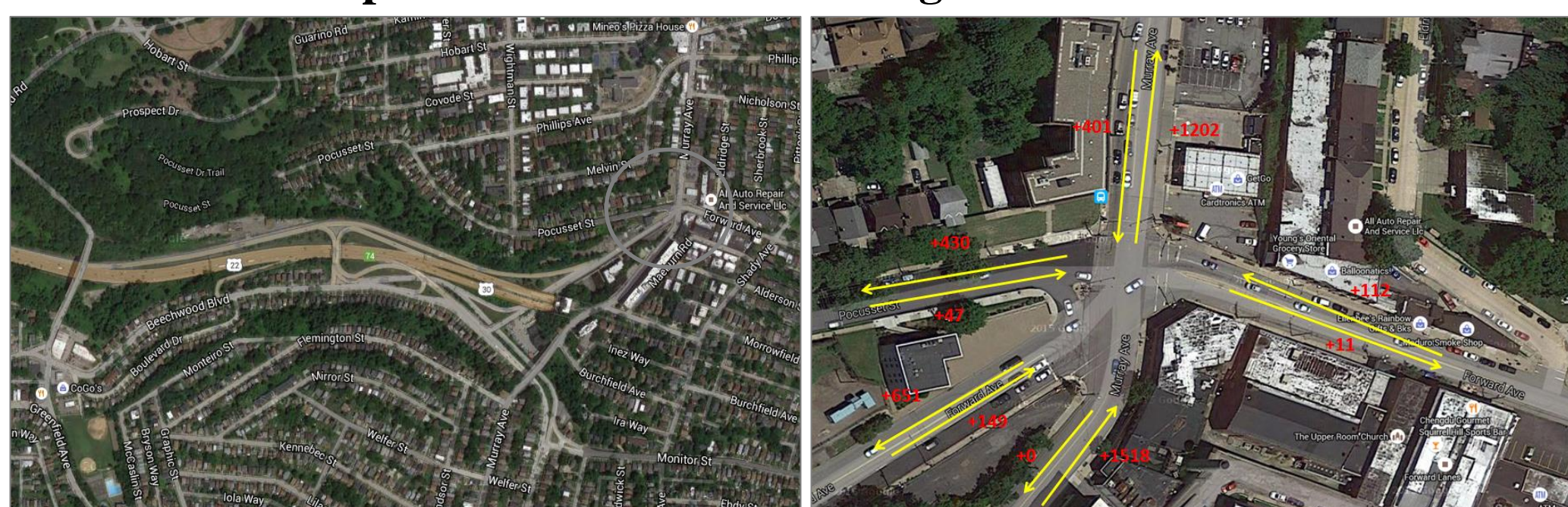
- Provide archived and real-time traffic data of every element of multi-modal transportation systems
- Reveal the behavior information for both passenger transportation and freight transportation
- Serve as a key instrument for managing transportation systems
- Target a range of users including legislators, transportation planners, engineers, researchers, travelers and private companies

Real-Time DTA / Off-line DTA

Dynamic Network Analysis & Real-time Traffic Management for Philadelphia Metropolitan Area

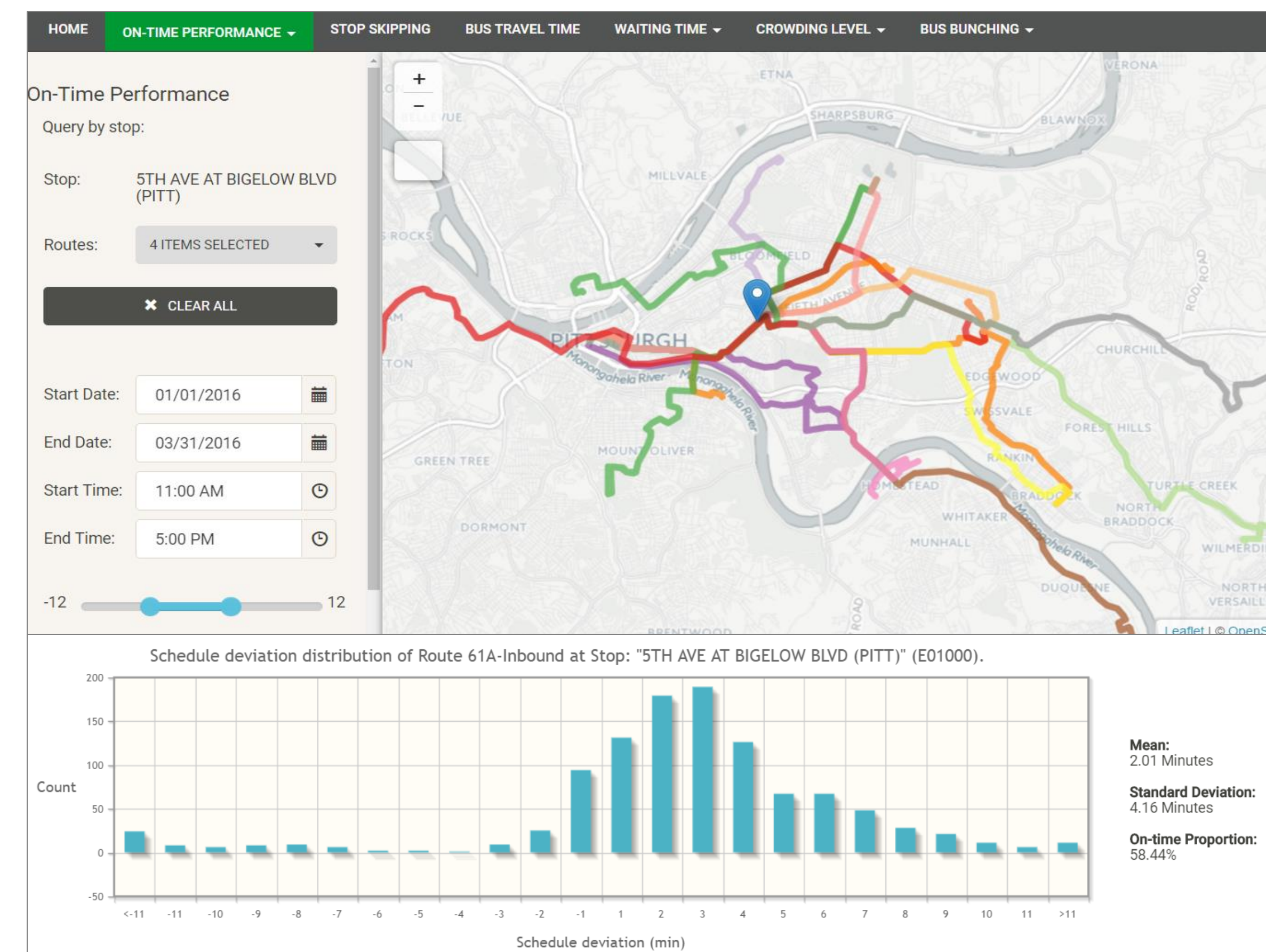


Traffic impact of the Greenfield Bridge closure

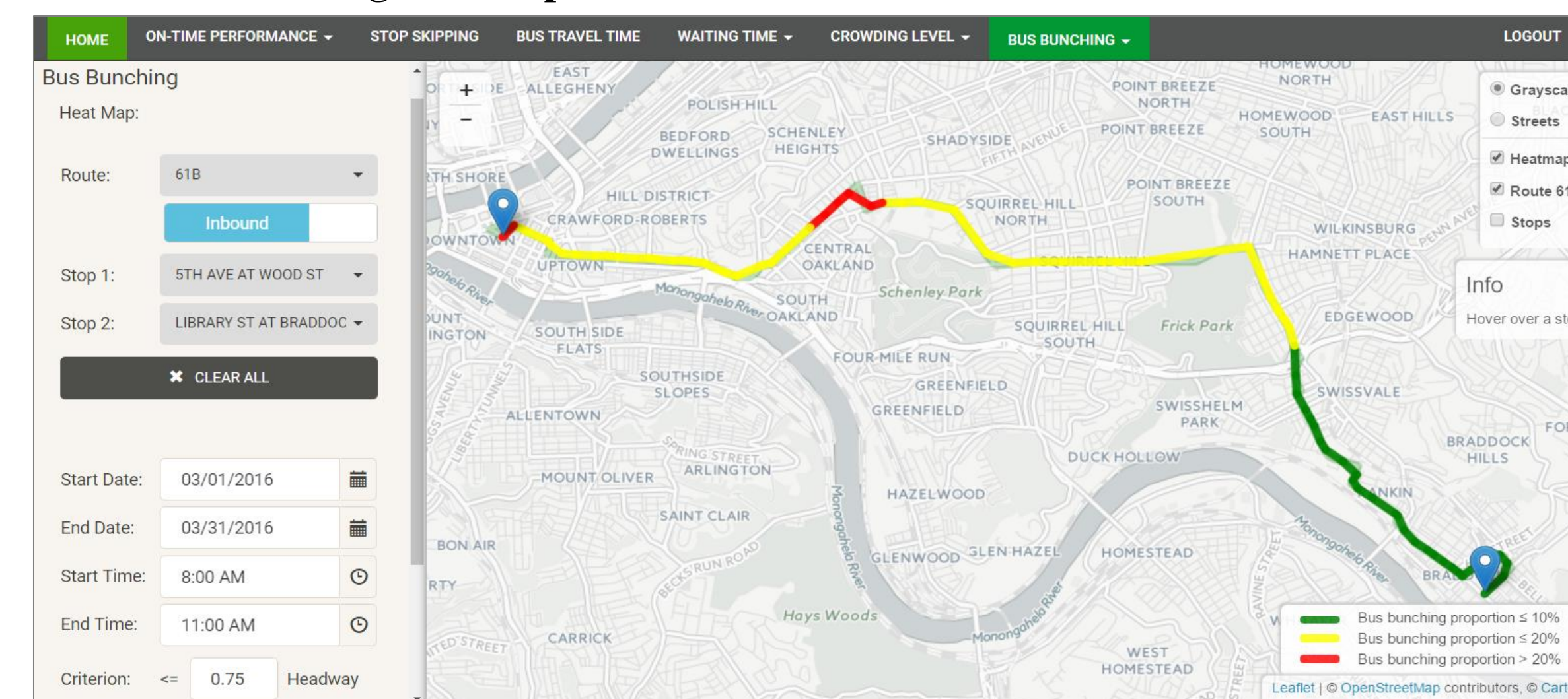


Transit

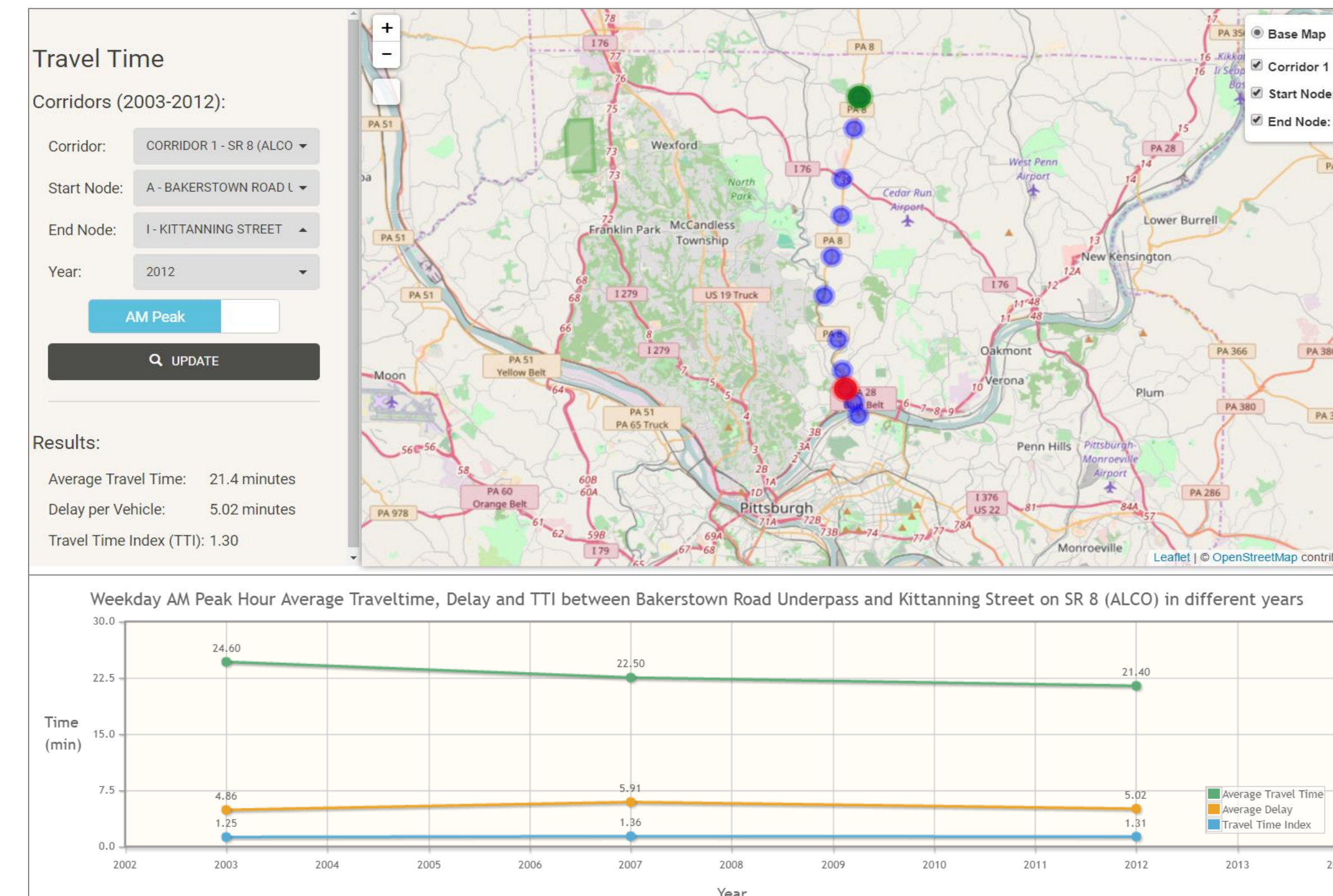
On-time Performance



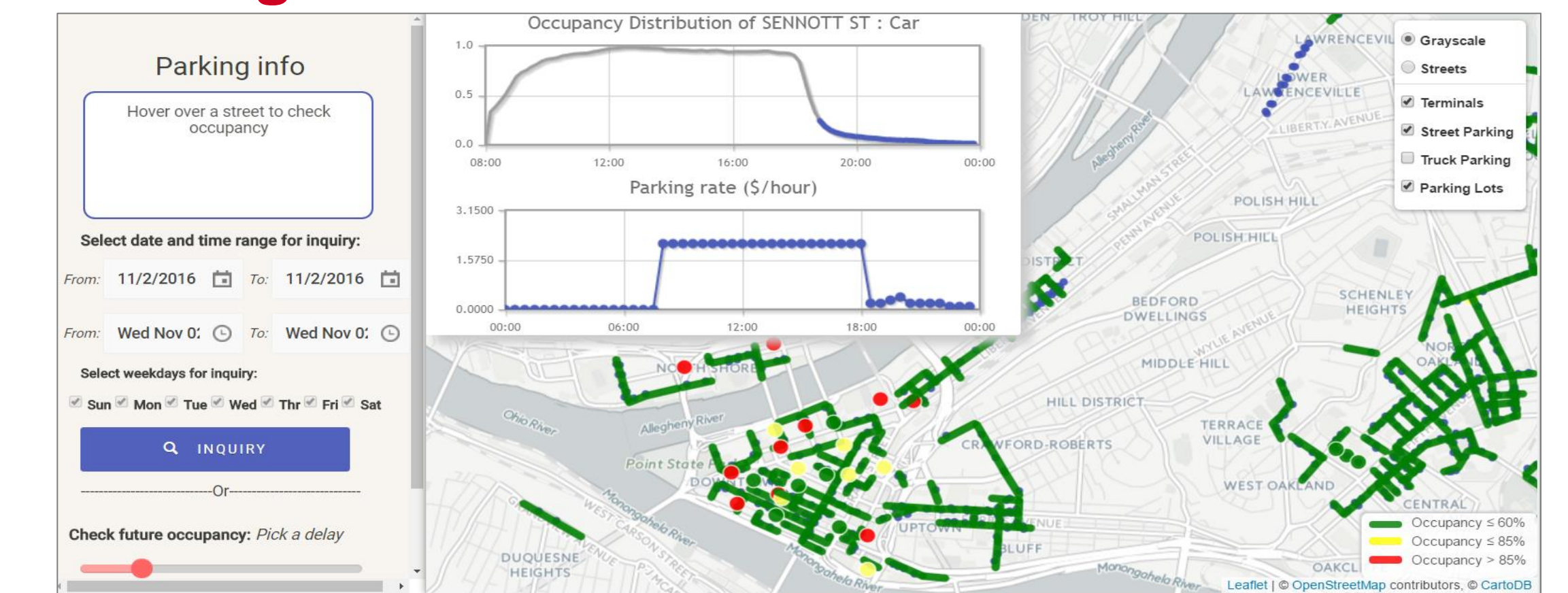
Bus Bunching Heatmap



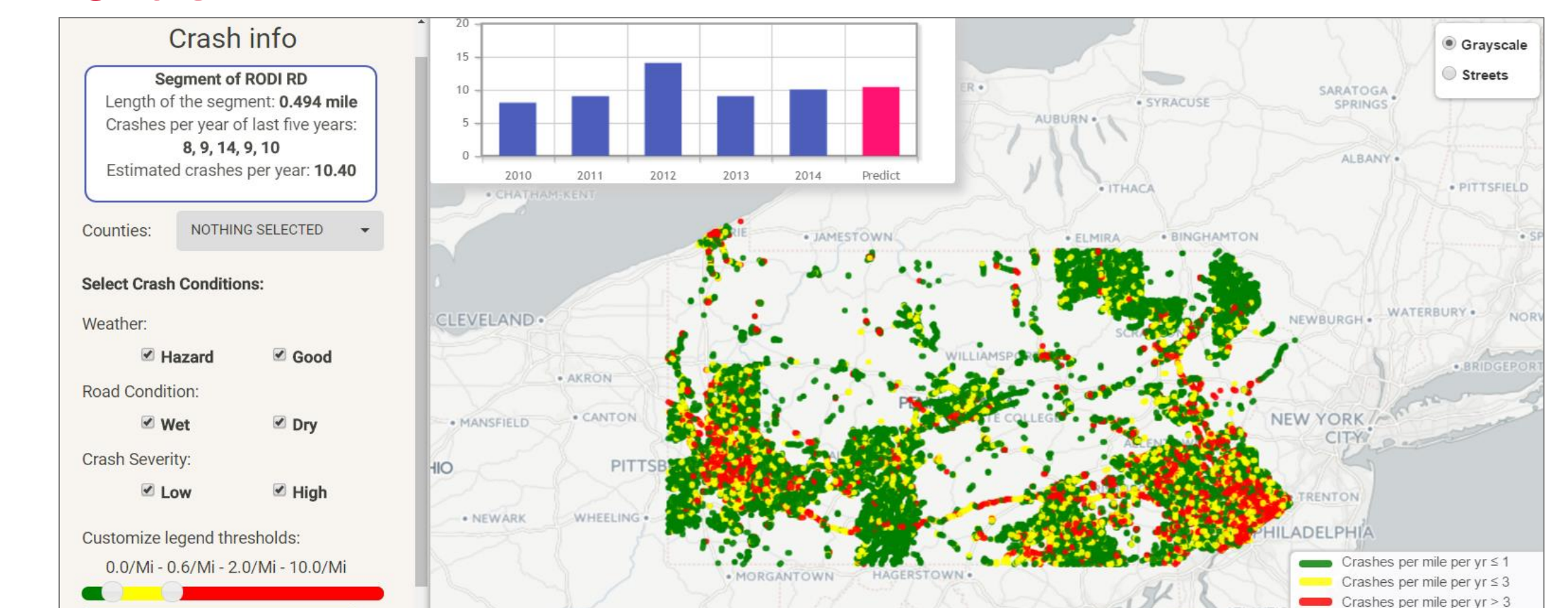
Corridor Travel Time



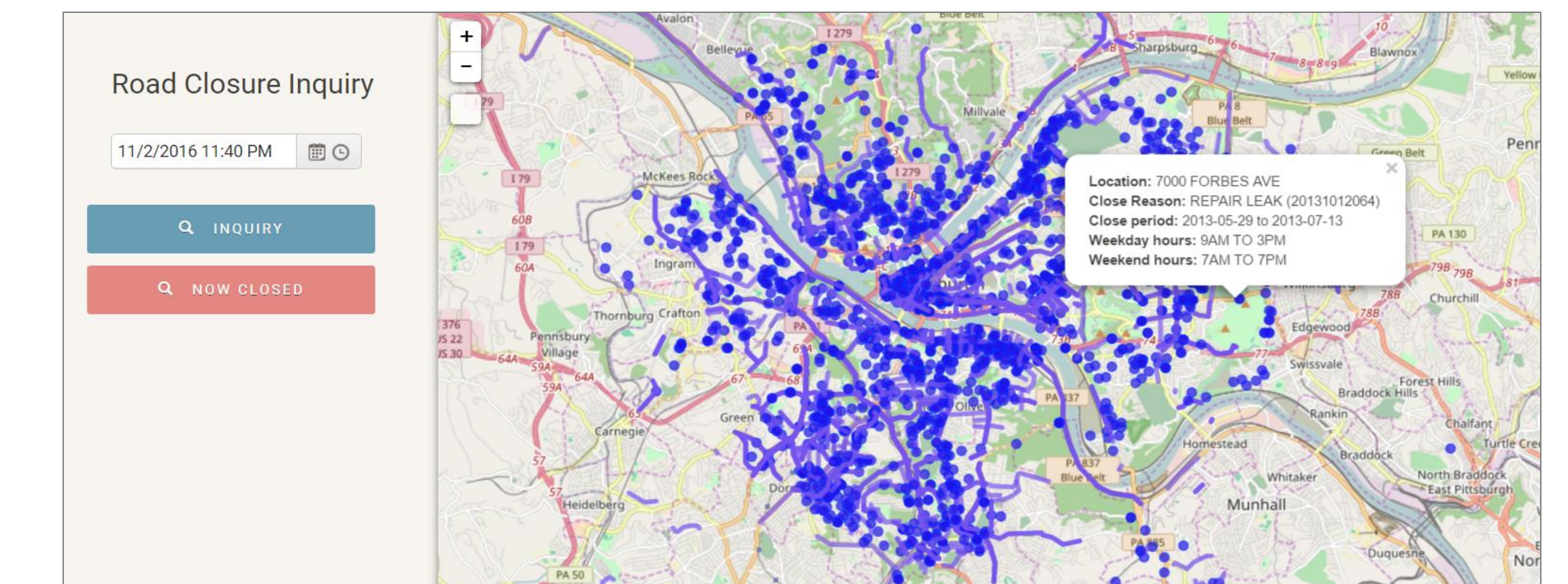
Parking



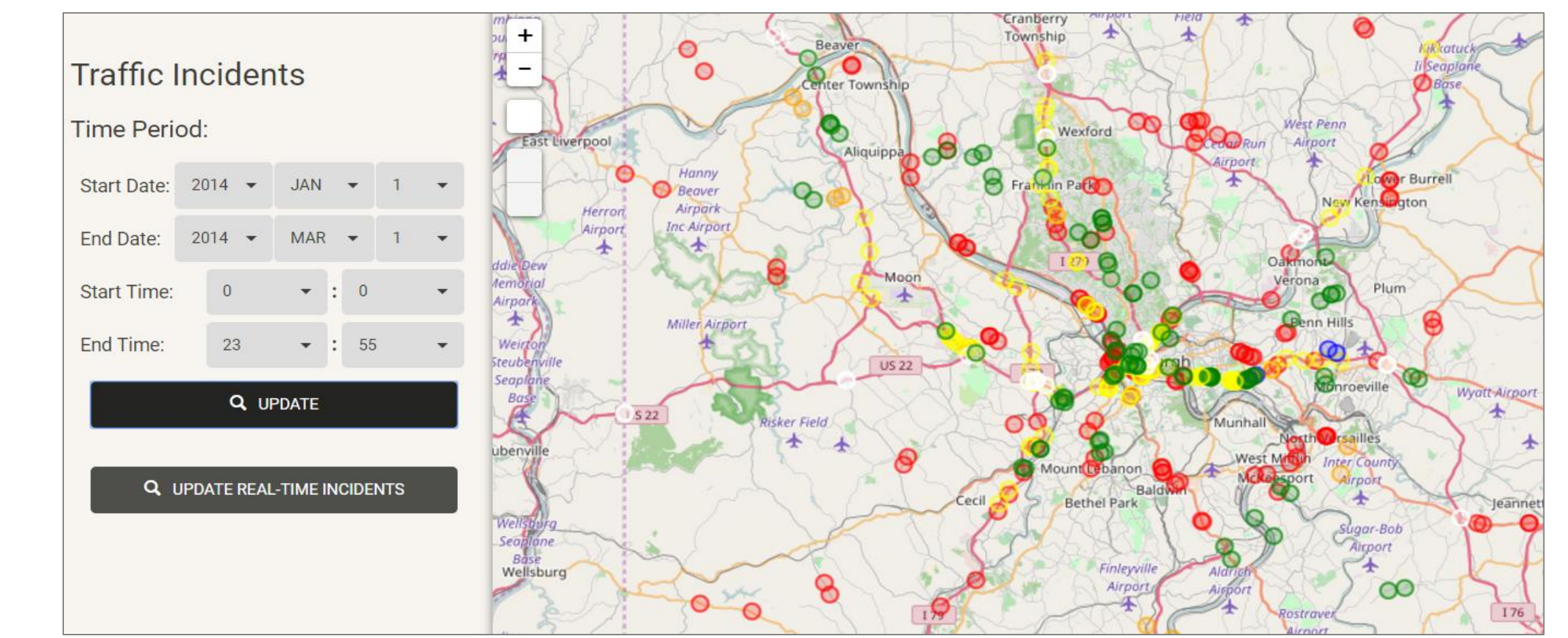
Crash



Road Closure



Incident



Future Work

- We are now working with various deployment partners to conduct research on mobility data analytics, and to develop decision making tools for facilitating transportation system management.
- We also work with private sector to develop travel-related products or service that ultimately improves travelers' experience.